



GREENMARK
DEVELOPERS



GALAXY
APARTMENTS
An IGBC Pre-certified Green Project



Where stars like you reign supreme



a star
location
at its finest

Located 200 metres off the Kondapur-Hafeezpet Road, GALAXY APARTMENTS is an ideal location with easy accessibility as it is in close proximity to the financial district of Kondapur and almost equidistant to the IT Hub of Madhapur-HiTec City and Gachibowli. In fact, you can pedal down to the office. It will not only keep you healthy and active, but also ensure that you play a key role in keeping the city clean and green and thereby bring down the level of pollution.


GALAXY
APARTMENTS

GALAXY is an IGBC pre-certified project. The IGBC certification ensures that GALAXY homes will adhere to 'green building' concepts of design, the material used and open spaces. Through GALAXY APARTMENTS, we intend to showcase our vision for sustainable, low carbon living and energy efficient smart homes. The project is planned to use sunlight, natural breeze, and rainfall to achieve energy optimization and sustainable living.

A space that is yours for life. We all build our own world within this world. A world where we are the Stars and our family, friends, near and dear ones form a part of our GALAXY. The love, affection and the dotting family make our world, our heaven, our Eden. Your world and your heaven could be here at GALAXY APARTMENTS.





star ambience

reflection of distinction

Six towering blocks, well-spaced out and aesthetically designed, GALAXY APARTMENTS are truly elegant and majestic in looks and ambience. The project spread over six acres of land has sit-outs, park for the elderly, kids play area, pargolas, jogging track and abundance of green cover. It is a classic example of the optimum use of space as well as how to resist the temptation of using the space unnecessarily. A gated community set in its own pristine and private corner within the heart of the new urban lifestyle, your home here will be the gateway to the pulse of the city.

With 468 units of extravagant but intimate development, it's time you enjoyed the limelight in absolute privacy. With its exemplary location perched on the edge of the urban bustle and offering easy access to arterial roads, you'll be one of the elite few who can truly call the heart of the city your very own backyard.

star facilities in style comes effortlessly

Who said quality cannot be economical? GALAXY APARTMENTS is a case in point. It is a testimony to providing luxurious facilities with superior specifications in the available space in a creative way with less burden to the pocket and more imagination. It plays a true foil to the hard and gruelling day at the work place with its soothing and sedate ambience.

PROJECT HIGHLIGHTS

- + Top of the Class Clubhouse
- + IGBC Pre-Certified
- + GHMC Approved Project
- + Vaasthu Compliant
- + 468 - 2 & 3 BHK Apartments
- + 6 Acres, 6 Blocks & 9 Floors Each
- + No Common Walls
- + Seismic Resistant Design
- + Rainwater Management and Harvesting
- + Sewerage & Water Treatment Plants with Reuse Networks
- + 24-hr Water Supply
- + Centralized Gas Supply
- + Gazebo Seating Space
- + Jogging Track
- + Elder's Park
- + Designer Landscaping
- + Amphitheater
- + Children's Play Area
- + High Speed Automatic Lifts
- + 100% Power Backup for common areas
- + Solar Fencing All Around the Project
- + 24-hr Security with Intercom





you will
be tempted
to call this cloud nine



CLUB FACILITIES



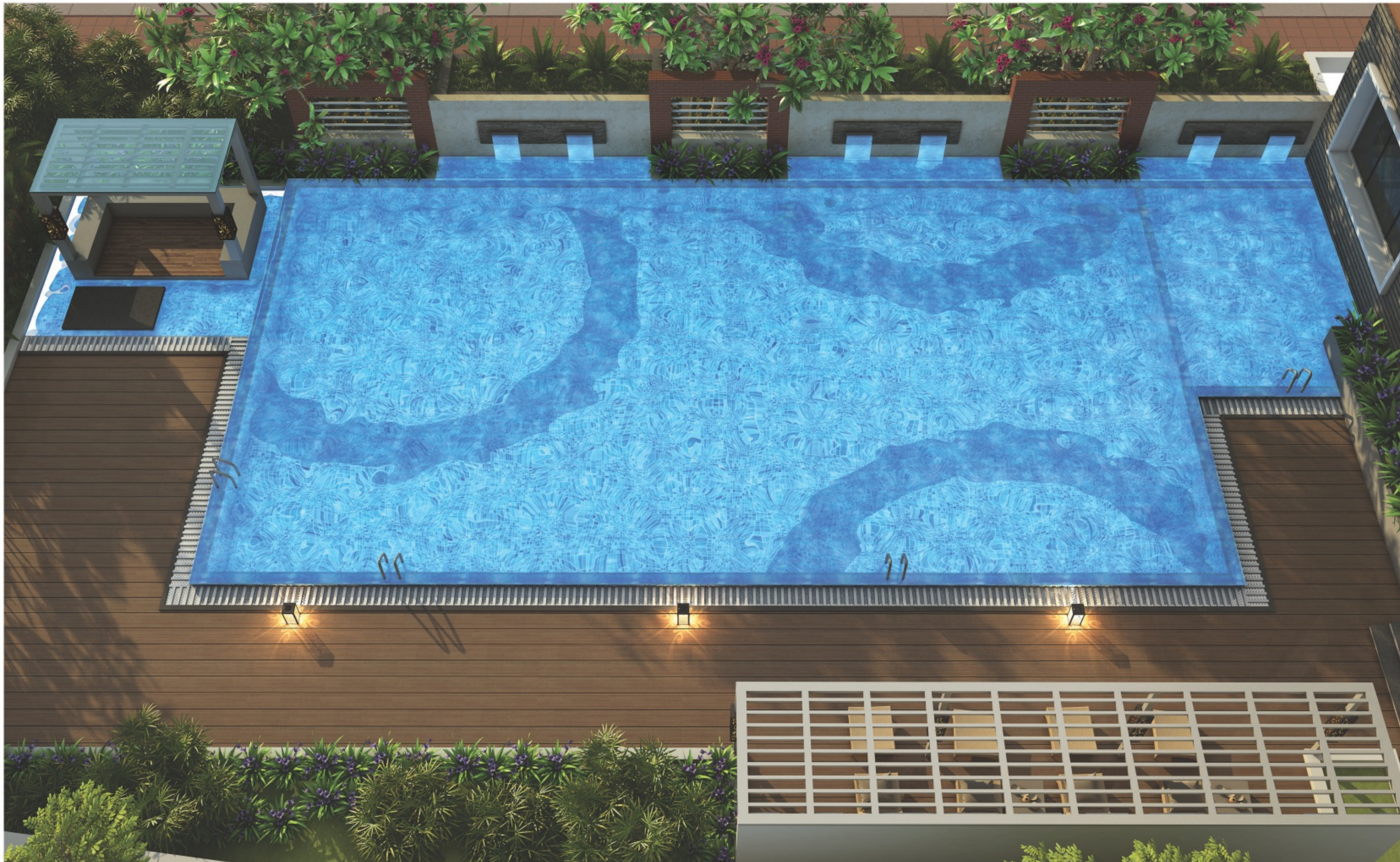
- + Indoor Games
Snooker, Billiards,
Table Tennis & Squash Court
- + 2 Indoor Shuttle/ Badminton Courts
- + Convenience Store
- + Health & Fitness Centre
- + Air-conditioned Gym
- + Aerobics / Dance Studio
- + Yoga / Meditation Hall
- + Health Spa with Sauna & Jacuzzi
- + Air- Conditioned Crèche
- + Restaurant & Coffee Shop
- + Exclusive Beauty Salon for Men and Women
- + Library
- + Emergency Medical Room
- + Multi-purpose Hall

GALAXY
APARTMENTS



25,000 sft.
lavish spaces





transport
yourself to somewhere idyllic

infinite landscape

The landscaping at GALAXY is planned to intermingle the natural flora and fauna of the region with IGBC gardening standards. Exotic plants and aesthetic sculptures have been placed all over the project. The whole concept presents an infinite picture of perfection that'll overwhelm the senses.



GALAXY
APARTMENTS



Existing 40 ft. Wide Road

Existing Road

Mini Forest

Volleyball Beach Court

Multi Purpose Court

Paved Lawns

Basket ball Court

Children's Play Area

Lounge Space On Wooden Deck

Swimming Pool

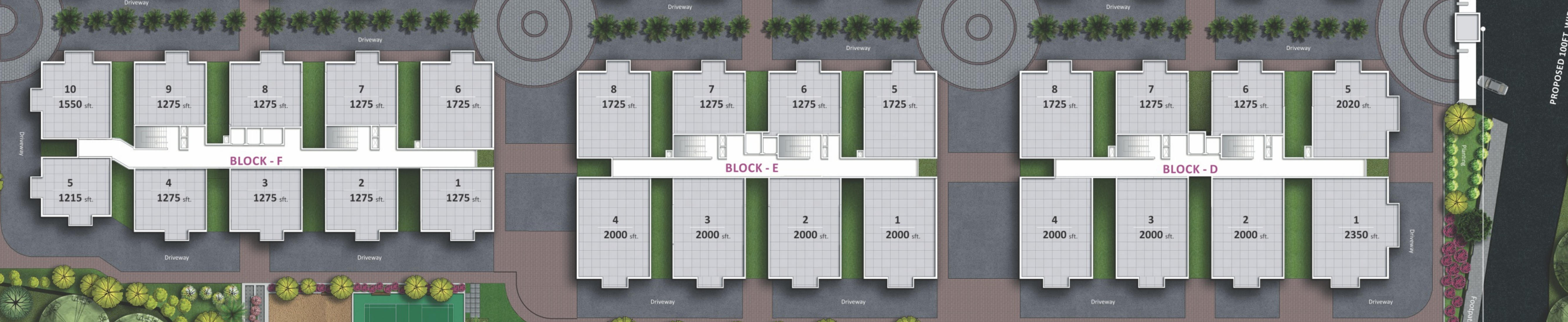
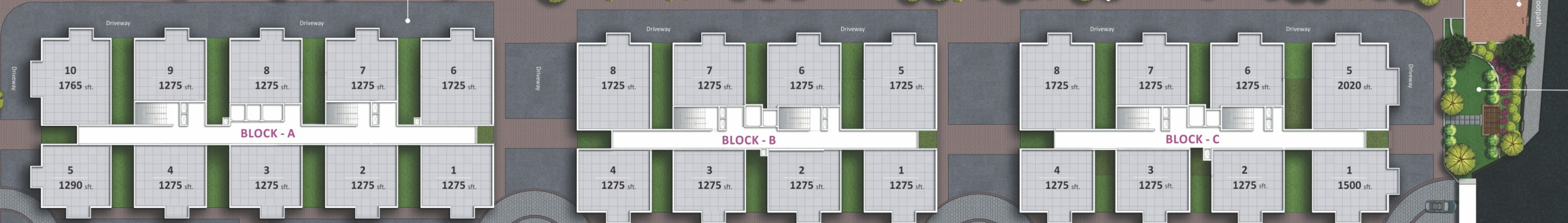
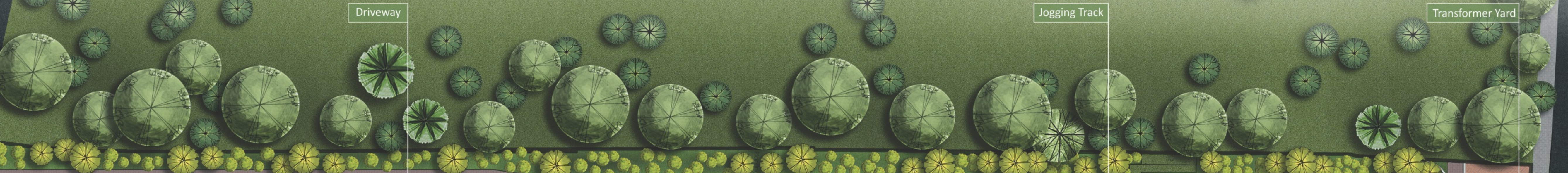
Amenities Block

Children's Play Area

Entrance & Exit

Wicket Gate

MASTER PLAN



PROPOSED 100 FT. WIDE ROAD

Lawn

Transformer Yard

Jogging Track

Driveway

Driveway

Driveway

Driveway

Driveway

Driveway

Driveway

Driveway

Driveway

Driveway

Driveway

Driveway

Driveway

Driveway

Driveway

Driveway

Driveway

Driveway

Driveway

Driveway

Driveway

Driveway

Driveway

Driveway

Driveway

Driveway

Driveway

Driveway

Driveway

Driveway

Driveway

Driveway

Driveway

Driveway

Driveway

Driveway

Driveway

Driveway

Driveway

Driveway

Driveway

Driveway

Driveway

Driveway

Driveway

Driveway

Driveway

Driveway

Driveway

Driveway

Driveway

Driveway

Driveway

Driveway

Driveway

Driveway

Driveway

Driveway

Driveway

Driveway

Driveway

Driveway

Driveway

Driveway

Driveway

Driveway

Driveway

Driveway

Driveway

Driveway

Driveway

Driveway

Driveway

Driveway

Driveway

Driveway

Driveway

Driveway

Driveway

Driveway

Driveway

Driveway

Driveway

Driveway

Driveway

Driveway

Driveway

Driveway

Driveway

Driveway

Driveway

Driveway

Driveway

Driveway

Driveway

Driveway

Driveway

Driveway

Driveway

Driveway

Driveway

Driveway

Driveway

Driveway

Driveway

Driveway

Driveway

Driveway

Driveway

Driveway

Driveway

Driveway

Driveway

Driveway

Driveway

Driveway

Driveway

Driveway

Driveway

Driveway

Driveway

Driveway

Driveway

Driveway

Driveway

Driveway

Driveway

Driveway

Driveway

Driveway

Driveway

Driveway

Driveway

Driveway

Driveway

Driveway

Driveway

Driveway

Driveway

Driveway

Driveway

Driveway

Driveway

Driveway

Driveway

Driveway

Driveway

Driveway

Driveway

Driveway

Driveway

Driveway

Driveway

Driveway

Driveway

Driveway

Driveway

Driveway

Driveway

Driveway

Driveway

Driveway

Driveway

Driveway

Driveway

Driveway

Driveway

Driveway

Driveway

Driveway

Driveway

Driveway

Driveway

Driveway

Driveway

Driveway

Driveway

Driveway

Driveway

Driveway

Driveway

Driveway

Driveway

Driveway

Driveway

Driveway

Driveway

Driveway



life
organised
at it's best



play up
the luxury

One of the disadvantages of urban living is lack of space for health and fitness activities. At GALAXY APARTMENTS, there is a provision for the fitness oriented to sweat it out at the well-equipped Gym. The Jogging track is where, you will find those who love natural settings burn their calories and for those who love to mix keeping fit the fun way, there is a cool pool where they swim, play and have fun.

Welcoming cascades of water and fascinating fountains are just some of the carefully considered elements that will always lull you into a receptive mood at the dedicated clubhouse building. The large pool with Jacuzzi features and a separate pool for kids will make your family rejoice. While many indoor games will bring out the sport in you and banquet space that opens to the lawns will act as a perfect venue for family gatherings, the equipped gym will inspire you to tone up.

GALAXY
APARTMENTS

Area Statement (in sq. ft.)

1	2	3	4	5	6	7	8	9	10
1275	1275	1275	1275	1290	1725	1275	1275	1275	1765

BLOCK-A



Area Statement (in sq. ft.)

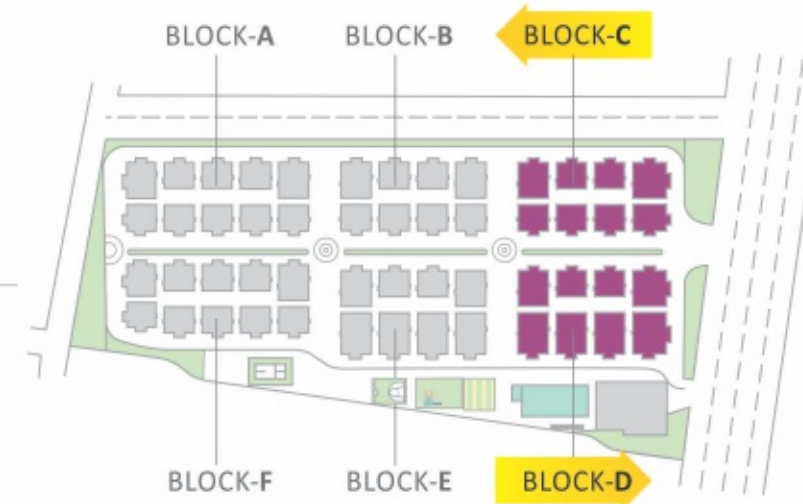
1	2	3	4	5	6	7	8
1275	1275	1275	1275	1725	1275	1275	1725

BLOCK-B



Area Statement (in sft.)

BLOCK-C							
1	2	3	4	5	6	7	8
1500	1275	1275	1275	2020	1275	1275	1725



Area Statement (in sft.)

BLOCK-D							
1	2	3	4	5	6	7	8
2350	2000	2000	2000	2020	1275	1275	1725



Area Statement (in sft.)

BLOCK-E

1	2	3	4	5	6	7	8
2000	2000	2000	2000	1725	1275	1275	1725



Area Statement (in sft.)

BLOCK-F

1	2	3	4	5	6	7	8	9	10
1275	1275	1275	1275	1215	1725	1275	1275	1275	1550



connect to the rhythm of the city

Just off Kondapur - Hafeezpet road and in the lane opposite to RTO office, the site of GALAXY APARTMENTS is a welcome relief. Whether your destination is Hitech City, Gachibowli or Jubilee Hills, know that you will be there in just a handful of minutes and for you are amid the hub of IT fervor – the best-connected part of the city. From quality education to contemporary healthcare everything else is a short hop away. The vicinity is abuzz with many shopping options, supermarkets for day-to-day needs, choicest of eateries for treating taste buds and ORR/MMTS/Metro station for citywide connectivity. What's More! You are never going to miss your next flight.



IT HUBS ALL AROUND

- + GOOGLE
- + TCS
- + ADP
- + TECH MAHINDRA
- + MICROSOFT
- + POLARIS
- + DLF
- + INFOSYS
- + WIPRO
- + RAHEJA MINDSPACE
- + DELOITTE
- + ORACLE
- + HSBC

STARRY TIME AT HOTELS

- + TRIDENT
- + RADISSON HOTEL
- + NOVOTEL
- + HYATT
- + WESTIN
- + DASAPALLA
- + AVASA
- + HOLIDAY INN

QUALITY, TIMELY HEALTHCARE

- + KIMS HOSPITAL
- + APOLLO
- + RAINBOW HOSPITAL
- + CONTINENTAL
- + CITIZEN
- + IMAGE

QUALITY EDUCATION NEARBY

- + CHIREC PUBLIC SCHOOL
- + OAKRIDGE
- + DPS
- + ISB
- + HYDERABAD CENTRAL UNIVERSITY
- + NIFT
- + MERIDIAN
- + GAUDIUM

SWIFT CONNECTIVITY

- + KOTHAGUDA
- + KONDAPUR
- + GACHIBOWLI
- + ORR
- + FINANCIAL DISTRICT
- + HITECH CITY
- + MADHAPUR

ENTERTAINMENT / RETAIL THERAPY OPTIONS

- + FORUM MALL
- + INORBIT MALL
- + MANJEERA MALL
- + SLN
- + GACHIBOWLI STADIUM

NATURE'S ESSENCE

- + BOTANICAL GARDENS

ABOUT DEVELOPER

ENCAPSULATING THE EXTRAORDINARY TRAITS OF A REAL ESTATE COMPANY OF SUBSTANCE

GREENMARK DEVELOPERS encapsulates the extraordinary traits of a real estate company of substance – high quality solutions, transparency in operations, timely delivery and superior customer satisfaction. The combination of hand-picked locations, modern amenities and steadfast commitment to design and value lend key to the company's phenomenal success and reputation. The team's primary focus, however, is to craft fully integrated communities that can offer the best ambience to the residents.

- + Has successfully completed and handed over all their previous projects within the promised time-lines
- + Has always taken up projects as single phased developments and not in staggered manner
- + Has always launched their projects only after achieving all approvals and reaching certain construction goals
- + Has introduced concepts like imported Inroof Solar Domes for the first time in India, to make common areas energy efficient.
- + Practices world class and highly responsible energy and resource saving technologies across all its projects.

Completed Projects	Ongoing Projects	Upcoming Projects





SPECIFICATIONS

STRUCTURE

RCC framed structure to withstand wind & Seismic loads.

SUPER STRUCTURE

Light weight brick masonry in cement mortar.

PLASTERING

Plastering with sponge finish.

WOOD WORK

Main door: Engineered wooden frames with moulded panelled door shutter with polish and hardware of a reputed make.

Internal doors: Engineered wooden frames with moulded panelled door shutter with paint finish & hardware of reputed make.

Windows: UPVC Windows and French doors of reputed make.

PAINTING

External: Two Coats exterior acrylic emulsion paint of Asian or equivalent make.

Internal: Smooth wall putty finishes with acrylic emulsion of Asian or equivalent make over one coat of primer.

TOILETS

All toilets will consist of:

- + EWC with flush tank of Hindustan/Parry or equivalent make.
- + Hot & Cold water mixture with showers.
- + Provision for geysers in all bathrooms.
- + Chrome -plated CP fittings of Jaguar or equivalent make.

ELECTRICAL

- + Concealed copper wiring of reputed make.
- + Power outlets for air-conditioners in all bedrooms.
- + Power plugs for cooking range chimney, refrigerator, microwave ovens and mixer/grinders in kitchen.
- + Plug points for TV.
- + Miniature circuit breakers (MCB) for each distribution boards.
- + Modular switches are of Anchor or equivalent make.

FLOORING

Living, Dining, Bedroom & Kitchen: Vitrified tiles.

Bathrooms: Acid-resistant, anti-skid ceramic tiles.

Utilities/Wash: Acid-resistant, anti-skid ceramic tiles.

DADOING

Bath Area: Glazed ceramic tiles up to door height.

Utilities/Wash Area: Glazed ceramic tiles up to 3'0" height.

KITCHEN

- + Provision for supply of treated and sweet water connection.
- + Provision for fixing of water purifier, exhaust fan and chimney.

TELECOM

- + Telephone point in Master Bedroom and Living area.
- + Intercom facility connecting the Security.

PLUMBING

- + Concealed best quality PVC/CPVC/UPVC pipes.
- + Metered water supply for each unit.

CABLE TV

Provision for cable connection in Living room & Master Bedroom.

LIFTS

High speed automatic passenger & service lifts with rescue device with V3F for energy efficiency of reputed make.

GENERATOR

D.G. set back-up with acoustic enclosure & AMF for common areas, essential areas and metered select loads in each unit.

OTHERS

Water/Sewerage treatment plants.

Disclaimer: This brochure is conceptual and not a legal offering. Facilities / Layout / Specifications / Plans / Information / Images / Brand names contained herein are indicative and the promoter reserves the right to change, alter, add, or delete any of them mentioned herein without prior permission or notice. The furniture shown in the plans is only for the purpose of illustrating a possible layout and does not form a part of the offering.





GREENMARK
DEVELOPERS

Plot No. 27, Jubilee Enclave, Hitech City, Madhapur, Hyderabad - 500084.

Office: +91 40 23681100 | E-mail: sales@greenmarkdevelopers.com | Web: www.greenmarkdevelopers.com



AN ISO 9001, ISO14001
& OHSAS 18001
Certified Company

ARCHITECTS

